

***mateco***

Reaching  
higher  
together!





# Contents

Who we are	2
What we do	4
Our history	6
Our company in figures	8
Our vision and mission	10
Our values	12
Rental	14
International Rental	16
Special Equipment	18
Sales	20
Service, care and spare parts	22
Training and safety	24
Contact us	26

# Who we are

The market leader in aerial working platforms in the Czech Republic with the largest fleet of equipment.



ASIA

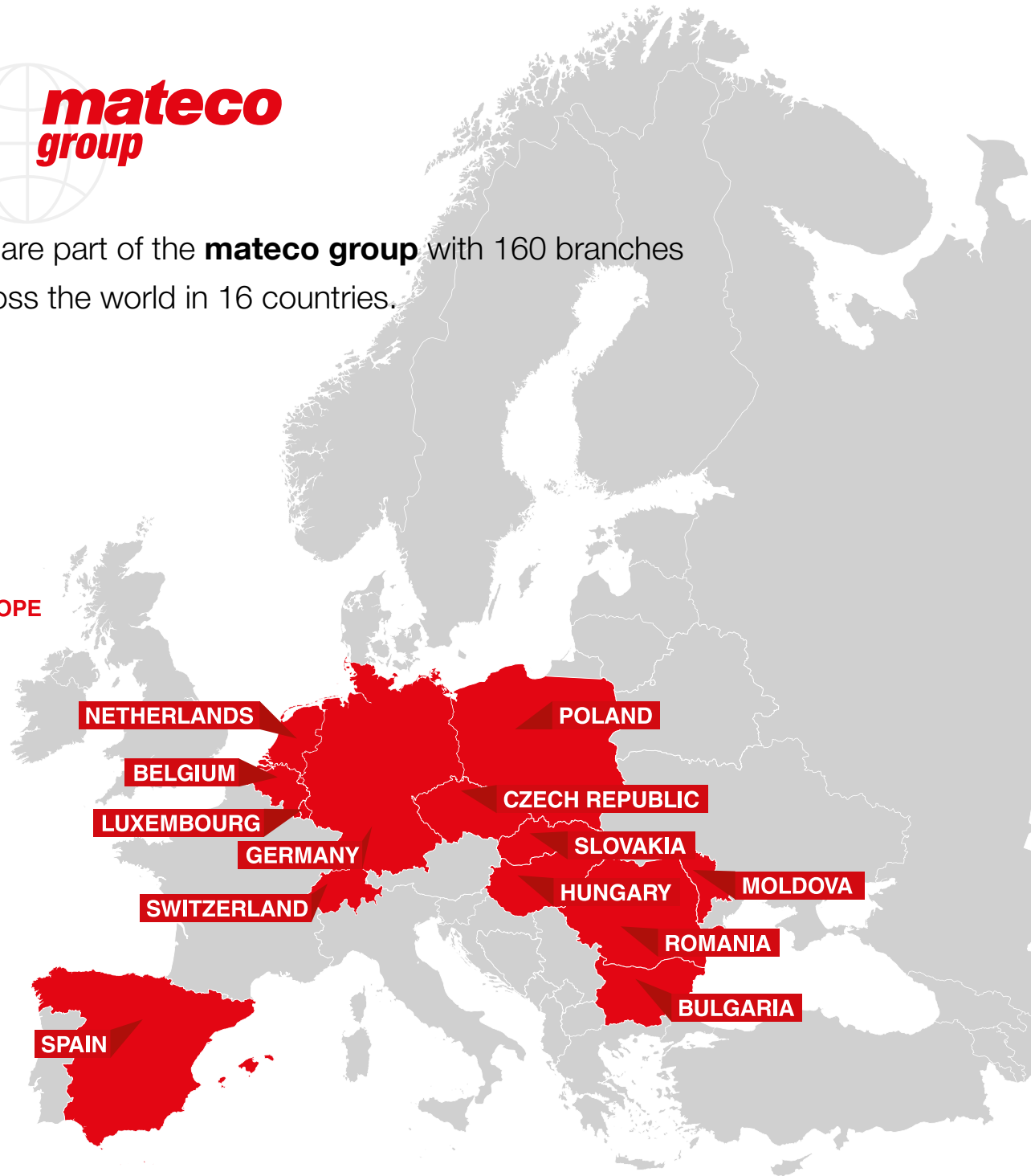


We are part of the **mateco group** with 160 branches across the world in 16 countries.

SOUTH AMERICA



EUROPE



# What we do



Sales



Rental

Service



Training



Spare parts

# Our history



Genie

GUNCO



TVH



## 2005

Establishment  
of the company

## 2006

Exclusive  
representatives  
of the GENIE  
brand

## 2008

GUNCO  
Netherlands  
partner

## 2009

Our company's  
first head office

## 2011

Entry  
of TVH Group

## 2014

IPAF  
membership

STATECH s. r. o. was founded at the end of 2005. The company's name is a portmanteau of the Czech words for "construction equipment". Even then, one of the two partners held the role of executive manager. Aerial work platforms have been our primary focus from the very beginning.

We have been an authorised GENIE distributor for Central and Eastern Europe since 2006. This year was key for us as we expanded into new markets for sales and service of aerial platforms.

We entered into a partnership with Gunco Netherlands (now called „mateco“) in 2008.

In 2009 we completed the construction of our first head office, a state-of-the-art service facility in Central Europe. Our base, which is situated on a site covering 23,000 m<sup>2</sup>, can be found in Dolní Beřkovice near Mělník.

Our position on the Czech market was reinforced in April 2011 by joining forces with a foreign partner, the Belgium-based TVH. TVH is one of the major players in sales of spare parts. As a member of this multinational group, we have easy access to spare parts and technical specifications from all well-known brands.

The IPAF promotes the safe and effective use of lifting equipment around the world in the broadest sense possible, by providing information and technical advice, through influencing and interpreting legislation and standards.



**STATECH**



**2015**

New logo

**2018**

New branch  
in Brno

**mateco**



**2018**

Rental = mateco

**2023**

New branch  
in Ostrava



**Sico**  
**mateco**

**2025**

Merger with  
SICO Rent s.r.o.

**mateco**

**2026**

Change of  
company name

Arrival of a new logo.

We completed construction of our new branch in Brno in 2018 on a 10,000 m<sup>2</sup> lot, thereby improving the reach of our services.

Another important change in 2018 is the arrival of the new name mateco, which will include all the company's activities related to rental. The reason is the strengthening of rental position under one strong name throughout Europe. Our services and legal entity do not change, you will continue to see STATECH in the activities of sales, service and training.

Construction of our new branch in Ostrava is set to be completed in 2023.

As of January 1, 2026, the companies SICO RENT s.r.o. and STATECH s.r.o. have merged. SICO RENT s.r.o. has become part of the mateco rental division.

The company changes its name to mateco Czechia s.r.o., with the mateco logo becoming the main corporate logo under which all company services will be presented from now on.

# Our company in figures

20 000 

satisfied customers

1 700 

persons trained annually

600 

platforms sold annually

8

branches across  
the Czech Republic





**1,5 mld.** 


in total annual company  
turnover

**230** 

full-time employees

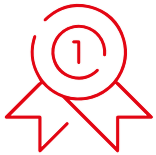
**2 400** 

machines in our rental fleet

**90** 

service technicians

# Our vision and mission



We want to be the first choice for our customers to accomplish their goals.  
Find your own path to growth through satisfied employees.



We are a team of professionals with a passion for providing superior service.  
We build above-standard relationships with our customers, partners and employees  
with a long-term perspective.



Mutual satisfaction is our mission.





# Our values



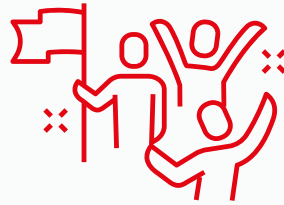
## **TEAMWORK**

The energy of the team drives us to achieve common goals. Fair dealings, open communication and mutual respect help us manage even the biggest challenges every day.



## **PROFESSIONALISM**

The active approach, high expertise and personal responsibility of all our employees are manifested in everything we do. Only a professional approach will ensure our position as a market leader.



## **SATISFACTION**

A satisfied employee = a satisfied customer. We perceive the individuality of each of our employees and create conditions so their work can bring them joy. We perceive the individuality of our customers in the same way and prepare solutions for each of them that lead to their satisfaction.



## **COURAGE AND INNOVATION**

Actions instead of words. We are always moving forward and have the courage to face new challenges and opportunities.



## **LONG-TERM PERSPECTIVE**

For us, a long-term perspective means sustainable development for the benefit of employees and customers. It guarantees customers a high standard of service and product quality. It then ensures job stability and constant personal development for employees.

# Rental

***mateco***

**2 400** machines  
in our fleet

**8** branches across  
the Czech Republic

**70** drivers  
and delivery  
trucks

- We rent aerial working platforms throughout the Czech Republic.
- We will advise you on which type of machine is most suitable for a particular job.
- We are constantly refreshing our fleet with new and more modern models.
- We will deliver an aerial working platform to the desired location anywhere in the Czech Republic.



Browse  
our offer  
on-line.

[www.mateco.cz](http://www.mateco.cz)





### Scissor lifts

**Max. height 33,7 m**

These lifts are the ideal solution for spaces that allow the machine to move vertically upwards.



### Trailer-mounted platforms

**Max. height 30 m**

Perfect for work in difficult terrain with grades exceeding 5°. Ideal for own transport, easy to use and quick to operate.



### Rough terrain forklift trucks

**Max. load capacity 5 t / Max. height 5,5 m**

These are ideal for unpaved surfaces in construction and agriculture.



### Articulated boom lifts

**Max. height 43,15 m**

They are equipped with a special articulated boom that allows you to reach high targets.



### Crawler-mounted platforms

**Max. height 35 m**

The tracked chassis is very suitable for hard-to-reach places and for workplaces where the surface requires minimal stress.



### Forklift trucks

**Max. load capacity 5 t / Max. height 6,28 m**

They facilitate work in warehouses and production halls.



### Telescopic boom lifts

**Max. height 57 m**

They are intended for work further from the base, where the terrain makes it impossible to work close to the workplace. Extra capacity (XC) version also available.



### Telehandlers

**Max. load capacity 6 t / Max. height 25,9 m**

These are compact off-road machines suitable for situations where manoeuvring is restricted. Available with forks, crane arm, hydraulic winch or work shovel.



### Reach trucks

**Max. lift 8,7 m**

Smart reach trucks help when stocking racks and picking products.



### Aerial work platforms

**Max. height 14,29 m**

They are compact and highly manoeuvrable, ideal for working in tight or less accessible areas.



### Truck-mounted platforms

**Max. height 75 m**

Due to their mobility and flexibility, they are an ideal work partner. Available with or without an operator.



### Material lifts

**Max. lift 7,42 m**

These lifts will help you move material up to heights of 7,42 meters.

# International Rental

INTERNATIONAL  
RENTAL *a mateco division*

- We can arrange the rental of any machine anywhere in Europe for you.
- We will provide service care during your project.
- You will only have to communicate in your native language throughout the order.



# mateco

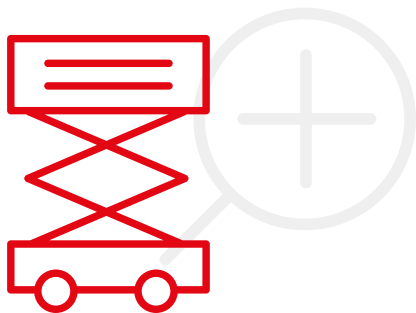


# Special Equipment

**SPECIAL  
EQUIPMENT**  
*a mateco division*

Through our sister company, we can also provide you with above-standard machines:

- electric and hybrid scissor lifts,
- diesel scissor lifts with reach up to 34 m,
- diesel telescopic boom lifts with reach up to 58 m,
- electric, hybrid and diesel articulated boom lifts,
- mini cranes,
- and special telehandlers with lifting heights up to 31 m.



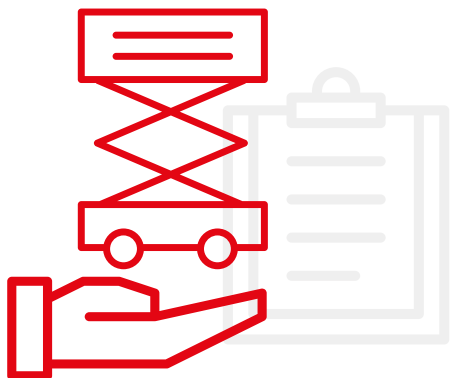


SPECIAL  
EQUIPMENT  
a **mateco** divisio

# Sales

- We offer new and used aerial working platforms across the Czech Republic and in 16 European countries.
- We will help you select the right machine for your specific job.
- We also have our own fleet of delivery trucks to deliver it to you anywhere in the Czech Republic.
- As part of our partner sales network, we can deliver machines almost anywhere in Europe.

We represent the following global brands:



Browse  
our offer  
on-line.

[www.mateco.cz/en/sales/](http://www.mateco.cz/en/sales/)

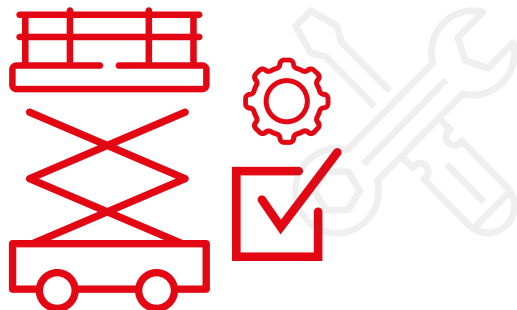


# Service, care and spare parts

**90** trained service technicians

**25** fully equipped service vehicles

- Non-stop service dispatching.
- Sales of spare parts.
- Technical audit testing and annual inspections.



We provide service and spare parts for machinery from globally-recognised brands:





S námi dosáhnete výši!

**PRACOVNÍ  
PLOŠINY**

**STATECH**  
Dívák matco group

PRODEJ - PRONÁJEM - SERVIS - ŠKOLENÍ  
☎ 728 270 270

[www.statech.cz](http://www.statech.cz)

# Training and safety

**mateco**  
academy

**1 700** persons  
trained annually



- We provide operator safety training (at our branches or at the customer's site).
- Select parts of the theoretical training can be completed on-line through the mateco academy.
- We provide professional consultation.

## Training overview

- Training in the safe use of MEWP
- Training in work at heights and over open spaces
- MEWP operator training in accordance with the IPAF standard
- Sale and overhauls of PPE
- Forklift truck operator training



Browse our offer  
on-line.

[www.mateco.cz/en/training](http://www.mateco.cz/en/training)



# Contact us

## ***mateco***

Sale | Rental | Service | Training | Spare parts



**+420 728 270 270**



**info@mateco.cz**



**Počapelská 346, 277 01 Dolní Beřkovice**



**[www.mateco.cz](http://www.mateco.cz)**

Branches:

DOLNÍ BEŘKOVICE · PRAHA · PLZEŇ · OSTRAVA · ČESKÉ BUDĚJOVICE · HRADEC KRÁLOVÉ · BRNO · ÚSTÍ NAD LABEM



**mateco Czechia**



**facebook.com/plosiny**

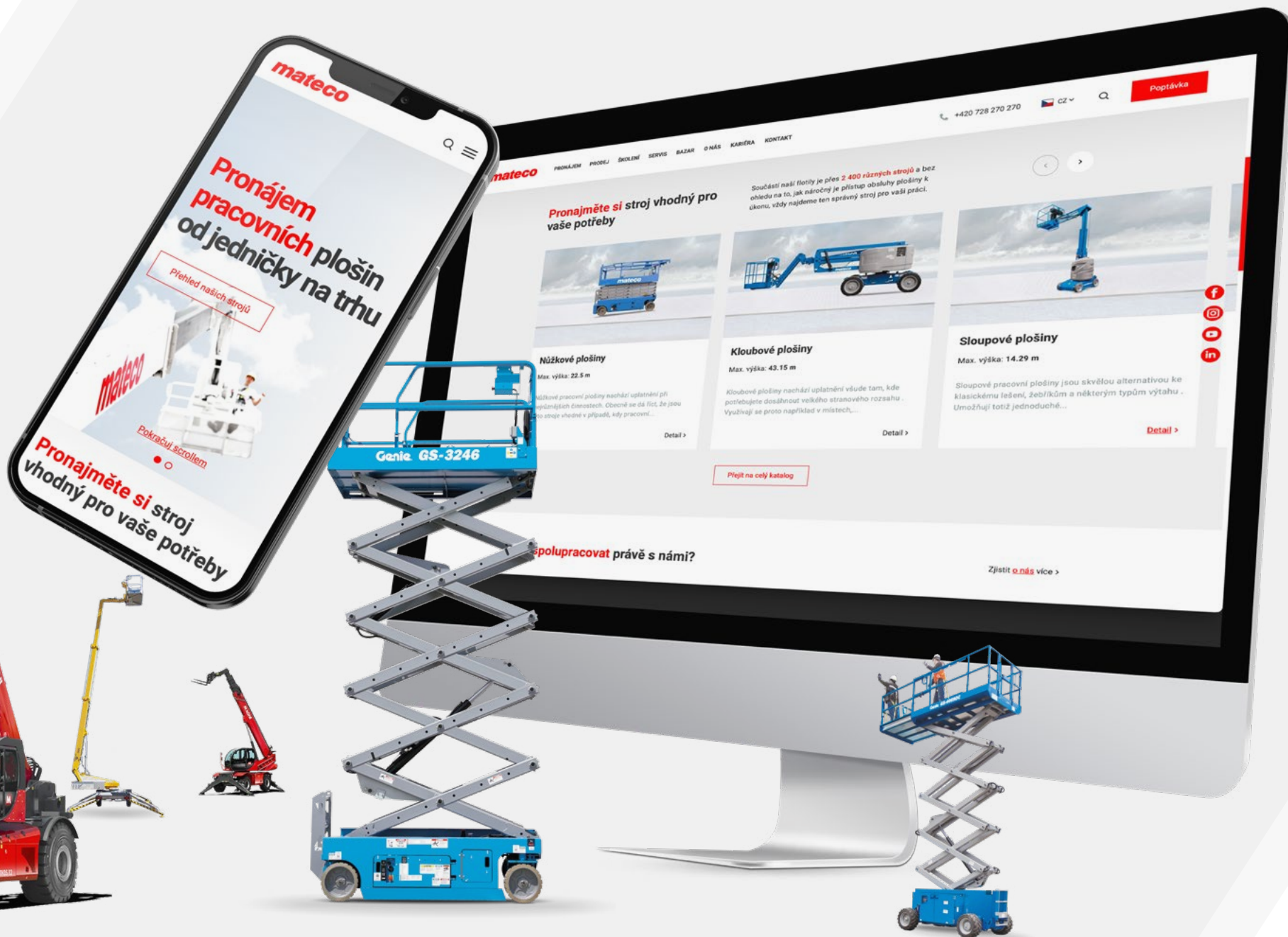


**mateco Czechia**



**@mateco\_cz**







Reaching  
higher  
together!



## **mateco Czechia s.r.o.**



**+420728270270**



**info@mateco.cz**



**Počapelská 346, 277 01 Dolní Beřkovic**



**[www.mateco.cz](http://www.mateco.cz)**

Branches:

DOLNÍ BEŘKOVICE · PRAHA · PLZEŇ · OSTRAVA · ČESKÉ BUDĚJOVICE · HRADEC KRÁLOVÉ · BRNO · ÚSTÍ NAD LABEM



**mateco Czechia**



**facebook.com/plosiny**



**mateco Czechia**



**@mateco\_cz**